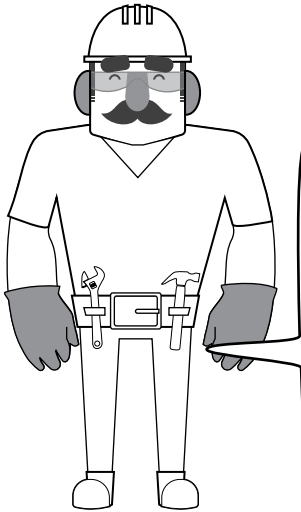
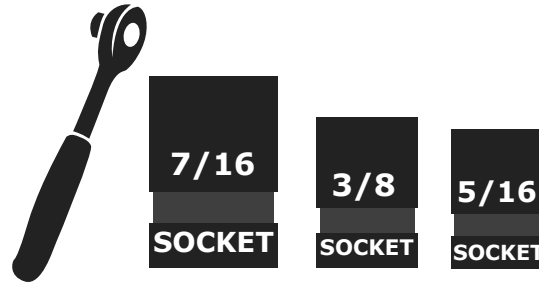


INSTALLATION INSTRUCTIONS: PREMIUM STEEL BOLT-ON ACCESSORIES



TOOLS NEEDED:

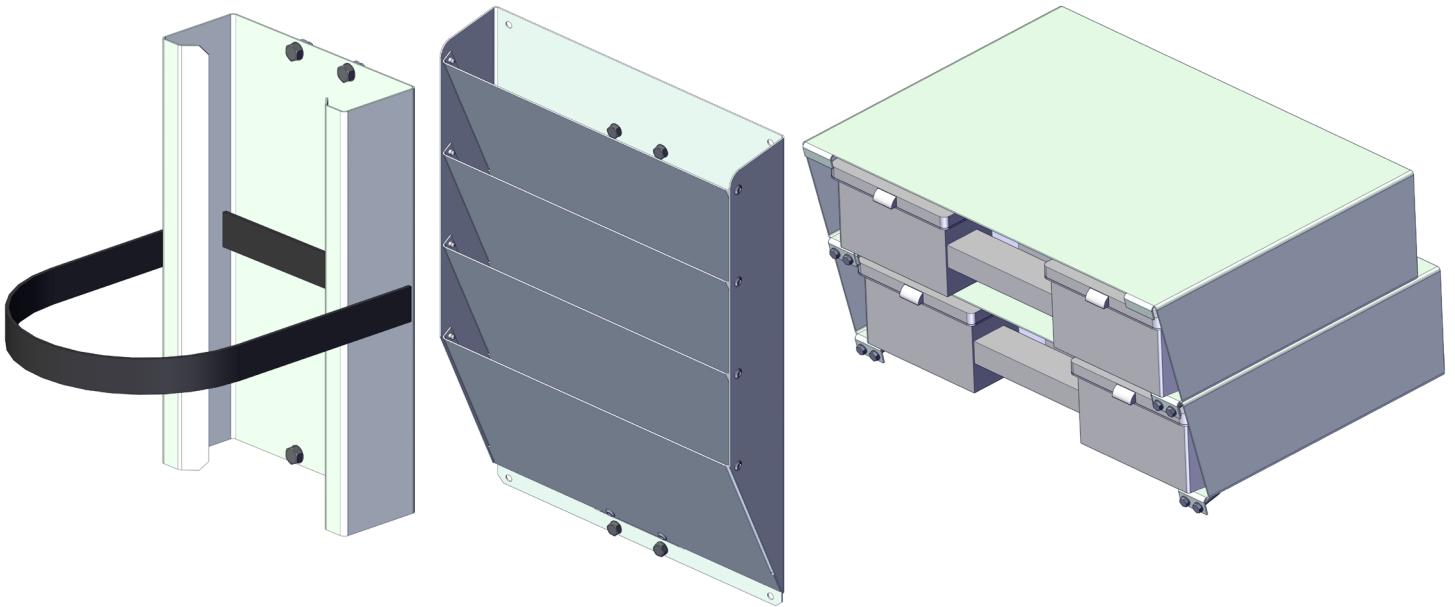


CAUTION:

This equipment is designed to be professionally installed by an approved upfitter. Always wear the appropriate Personal Protection Equipment as outlined by your local government and exercise caution when installing Westcan Manufacturing products. Westcan Manufacturing is not responsible for any damage done to the vehicle resulting from a poorly planned and/or executed installation. Both the installer and vehicle owner accept responsibility to properly install and operate Westcan Manufacturing products.

THESE INSTRUCTIONS APPLY TO PART NUMBERS

- 54-1030
- 51-6213
- 50-1006



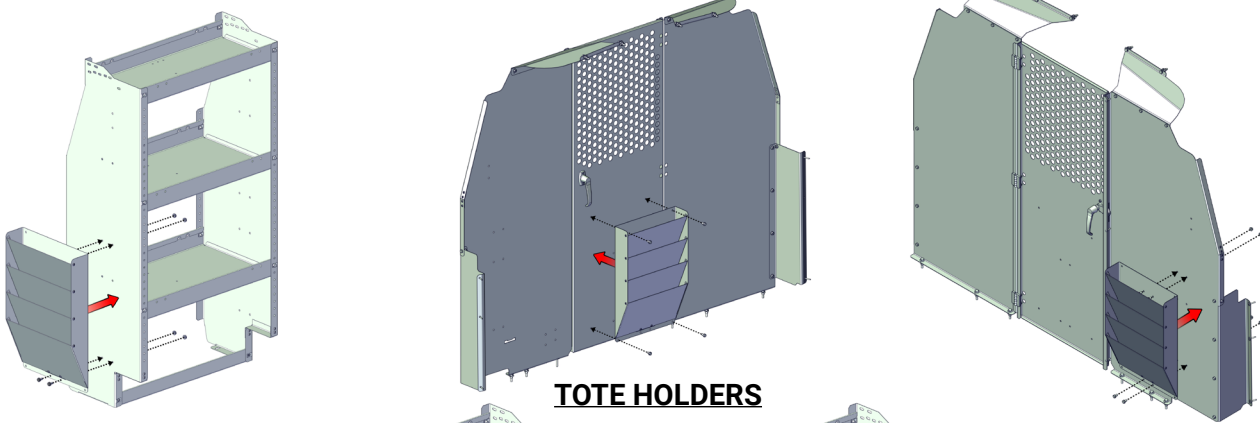
PREPARATION:

1. Ensure all parts are present and accounted for before installation. Plan the location of your installation ahead of time. Make sure your installation location does not impede any other components you are installing or damage the safety and functionality of your vehicle.
2. Every installation is different and can present its own unique challenges. Some hardware and interior trim may need to be altered to fit unique applications.
3. Exercise extreme diligence when drilling holes into a motor vehicle. Increasing complexity and model year changes can alter the location of fuel, hydraulic and electrical lines. Please visually inspect all locations prior to drilling.

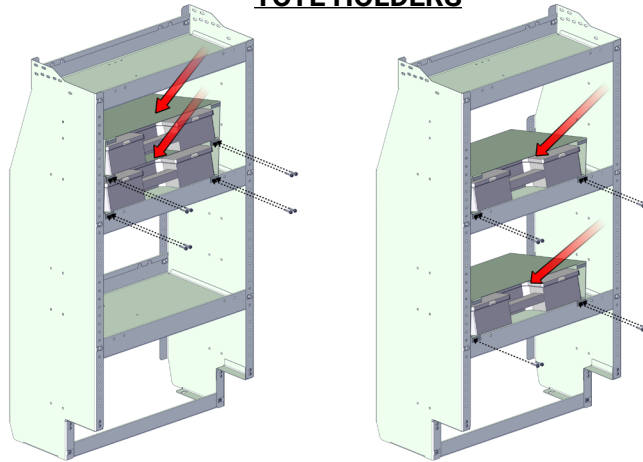
CAUTION:

4. Use drill stops whenever drilling a hole in your vehicle. Set the drill stop depth to the minimum effective depth required to drill the hole.

DOCUMENT STORAGE



TOTE HOLDERS



CYLINDER MOUNTS

